



## DE-BUSHING ADVISORY SERVICES QUESTIONNAIRE

# OVERVIEW OF SURVEY RESULTS

Funded by the Support to De-bushing Project of  
**Gesellschaft für Internationale Zusammenarbeit (GIZ)**  
**GmbH**

Implemented by

**Agra ProVision**

in collaboration with

**AgriConsult Namibia**



Dear valued participant

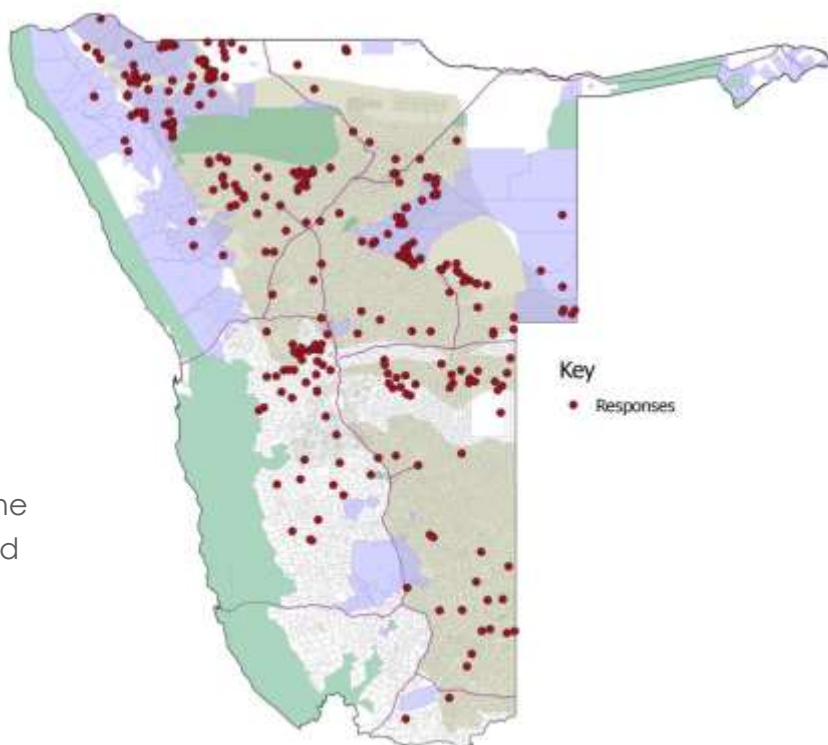
Thank you for taking the time to respond to the questionnaire survey for the de-bushing advisory services. Your input has contributed significantly to a better understanding of the needs of the land user, and to inform decisions regarding the form that the de-bushing advisory service can take.

As way of appreciation, we herewith share with you some of the analysed data. We trust that this will lead to a **De-bushing Advisory Services** that will become a useful and relevant tool to you, the land user.

Thank you once again for taking the time to participate.

## SECTION 1: WHO RESPONDED?

A total of 361 questionnaire responses were received, distributed as shown in Figure 1.

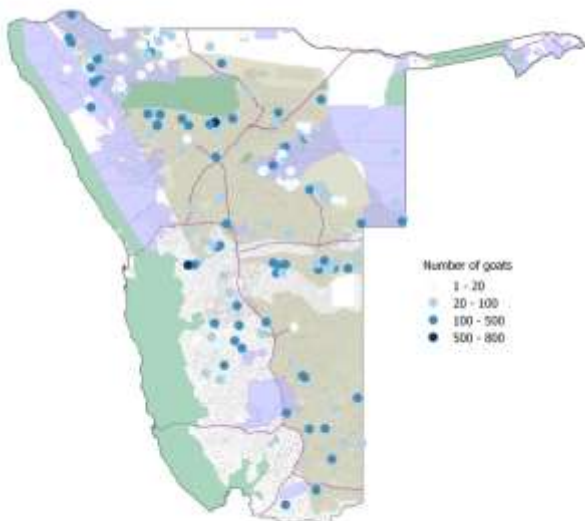
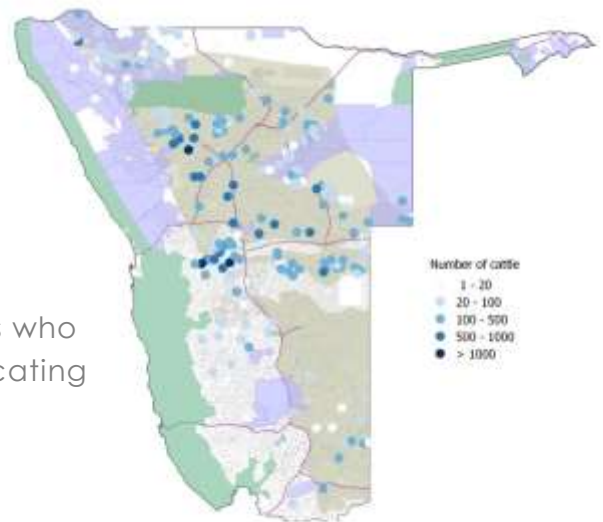


**Figure 1** Map showing the distribution of completed questionnaires received

**Table 1** Land tenure category of respondents to DAS questionnaire

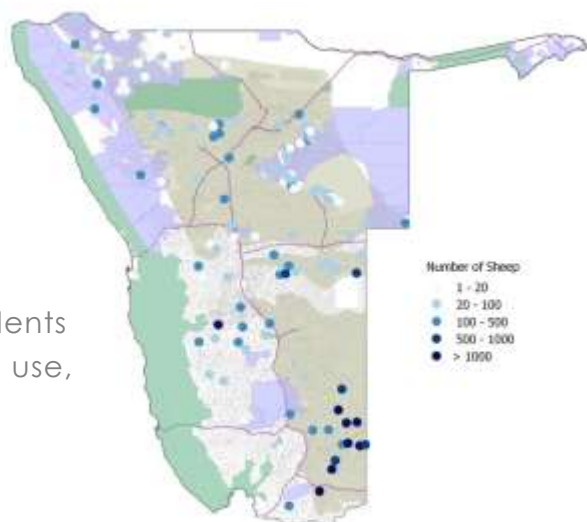
	Number (% of total)	Number that provided area (% of respondents in category)	Total area	Average land unit size (ha)
<i>Total number of respondents</i>	361			
Free hold	106 (29.4%)	88 (83.0%)	540 622	6 143
Resettled	65 (18.0%)	54 (83.1%)	160 682	2 976
Communal	190 (52.6%)	37 (19.5%)	87 715	2 371

**Figure 2** Distribution of respondents who recorded cattle as a land use, indicating herd sizes recorded



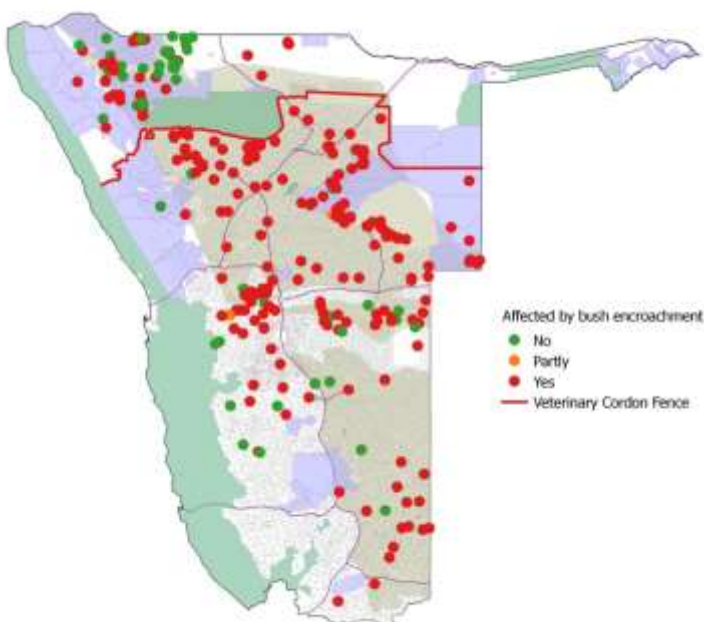
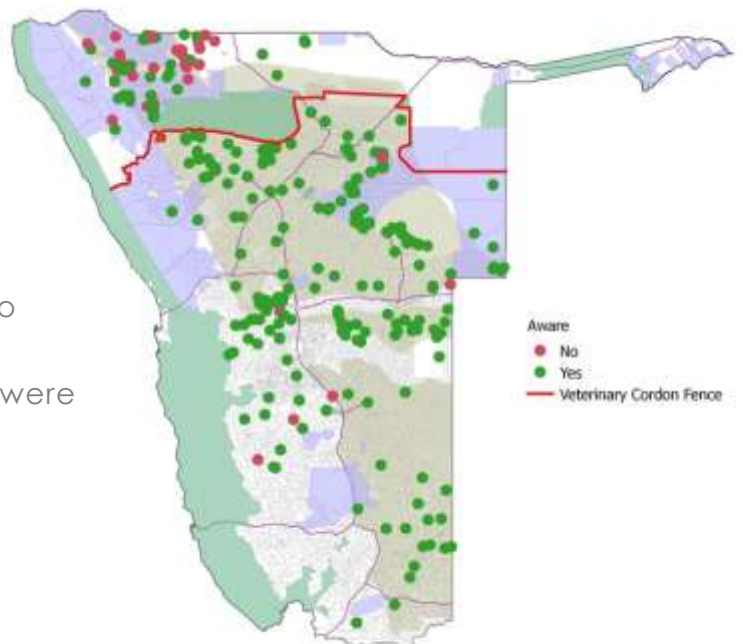
**Figure 3** Distribution of respondents who recorded goats as a land use, indicating herd sizes recorded

**Figure 4** Distribution of respondents who recorded sheep as a land use, indicating herd sizes recorded

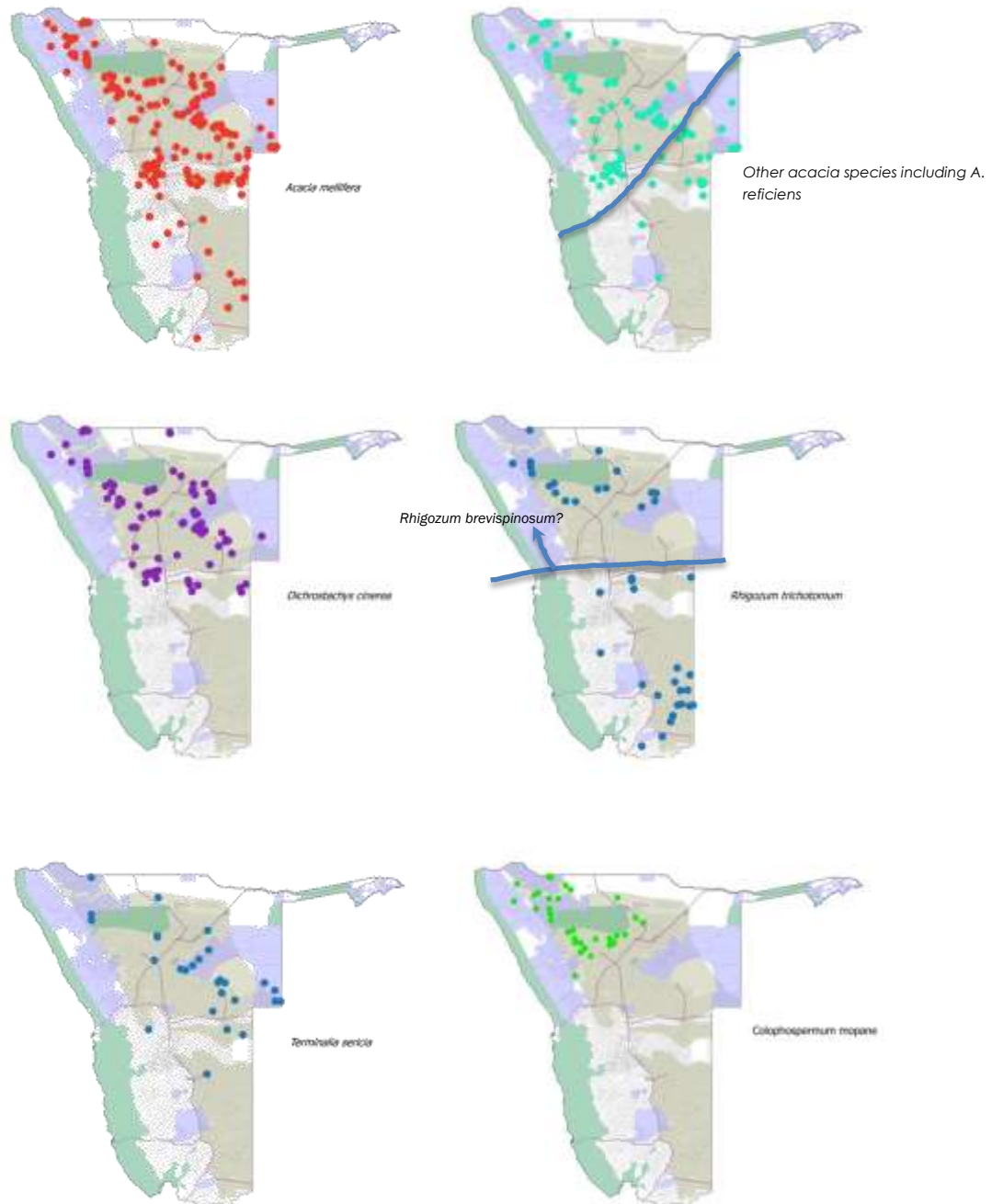


## SECTION 2: BUSH ENCROACHMENT

**Figure 5** Distribution of respondents who indicated they are aware of bush encroachment vs those who said they were not

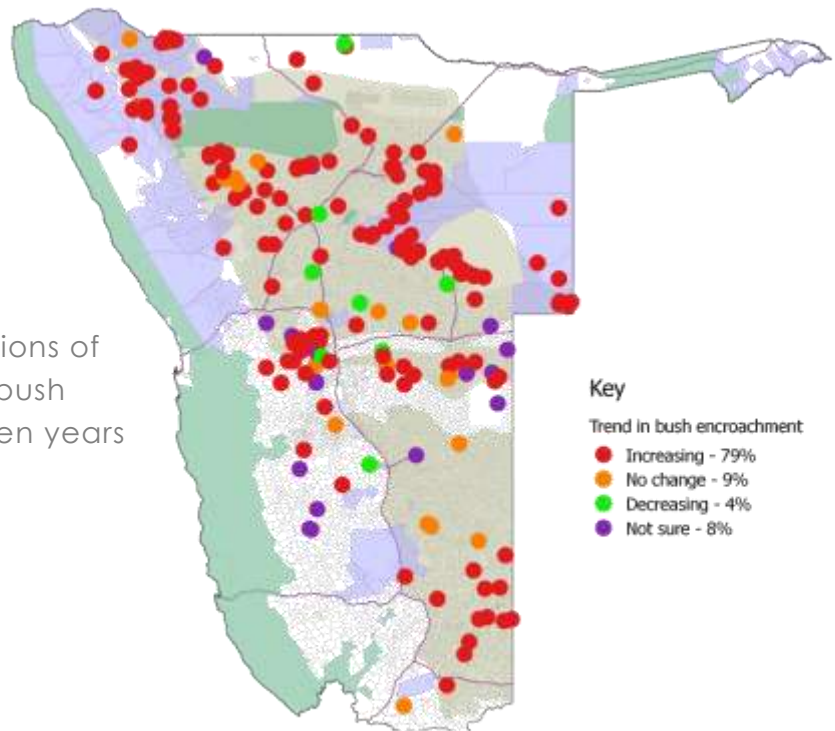


**Figure 6** Map showing distribution of respondents who consider their land affected or partly affected by bush encroachment, and those who say their land is not affected

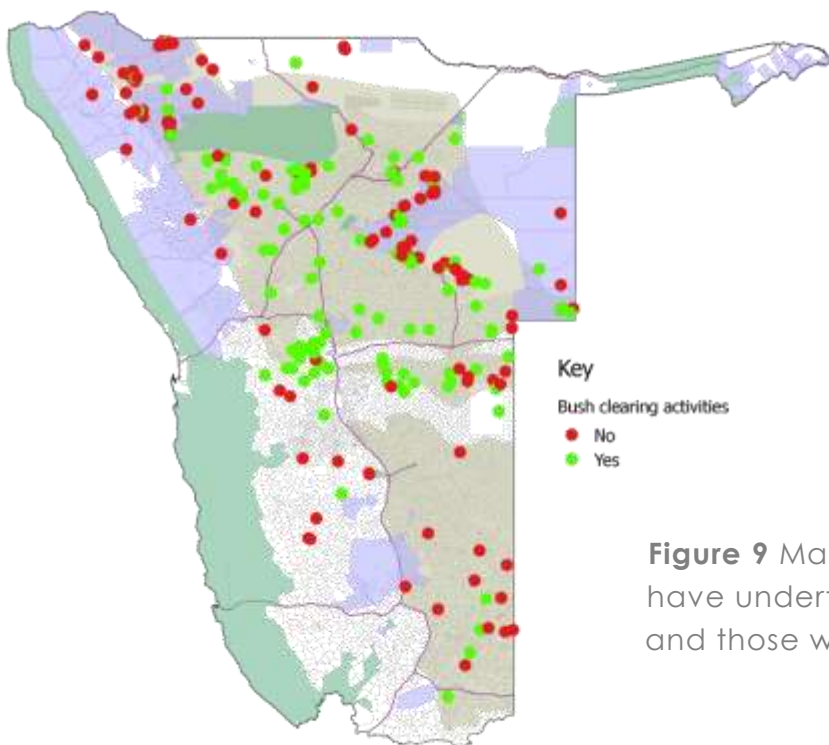


**Figure 7** Distribution of the six most common encroacher species, as identified by respondents

**Figure 8** Map showing perceptions of respondents over the trend in bush encroachment over the past ten years



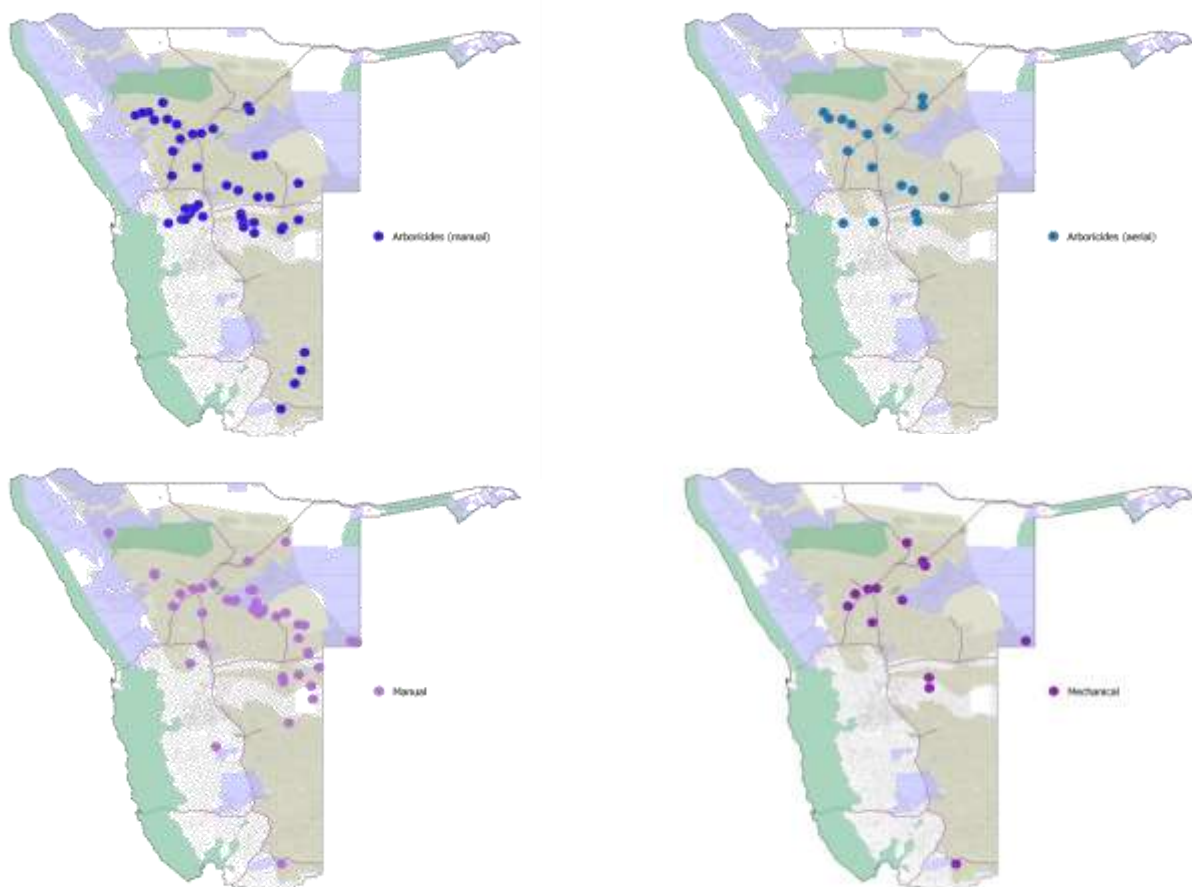
### SECTION 3: BUSH CLEARING ACTIVITIES



**Figure 9** Map showing respondents who have undertaken bush clearing activities, and those who said they have not.

**Table 2** Table indicating the use of various bush clearing methods by respondents who have undertaken some form of bush clearing

Bush clearing methods	Overall	Commercial	Resettlement	Communal
<i>Farmers who have done bush clearing</i>	126	72	13	41
Arboricides (manual spraying)	53 (42.1%)	48 (66.7%)	2 (15.4%)	3 (7.3%)
Arboricides (aerial spraying)	18 (14.3%)	18 (25.0%)	0 (0.0%)	0 (0.0%)
Manual cutting	50 (39.7%)	18 (25.0%)	5 (38.5%)	27 (65.9%)
Semi-mechanical	4 (3.2%)	3 (4.2%)	0 (0.0%)	1 (2.4%)
Mechanical	13 (10.3%)	11 (15.3%)	0 (0.0%)	3 (7.3%)
Burning	9 (7.1%)	2 (2.8%)	0 (0.0%)	7 (17.1%)



**Figure 10** Map showing distribution of the four most common bush clearing methods recorded by respondents



## SECTION 4: BUSH BIOMASS UTILIZATION

**Table 3** Utilization of bush biomass by respondents who indicated they have undertaken bush clearing.

	Overall	Commercial	Resettlement	Communal
Farmers who have done bush clearing	126	72	13	41
Was biomass used?				
Yes	44 (34.9%)	17 (23.6%)	4 (30.8%)	23 (56.1%)
No	70 (55.6%)	50 (69.4%)	6 (46.2%)	14 (34.1%)
No response	12 (9.5%)	5 (6.9%)	3 (23.1%)	4 (9.8%)

**Table 4** Respondents who have used bush biomass for commercial purposes

	Overall	Commercial	Resettlement	Communal
Farmers who utilized biomass commercially	21	15	3	2
Charcoal	15	11	2	1
Firewood	3	1	1	1
Fodder	1	1	0	0
Droppers and poles	1	1	0	0
Compost	1	1	0	0

## SECTION 5: ADVISORY SERVICES

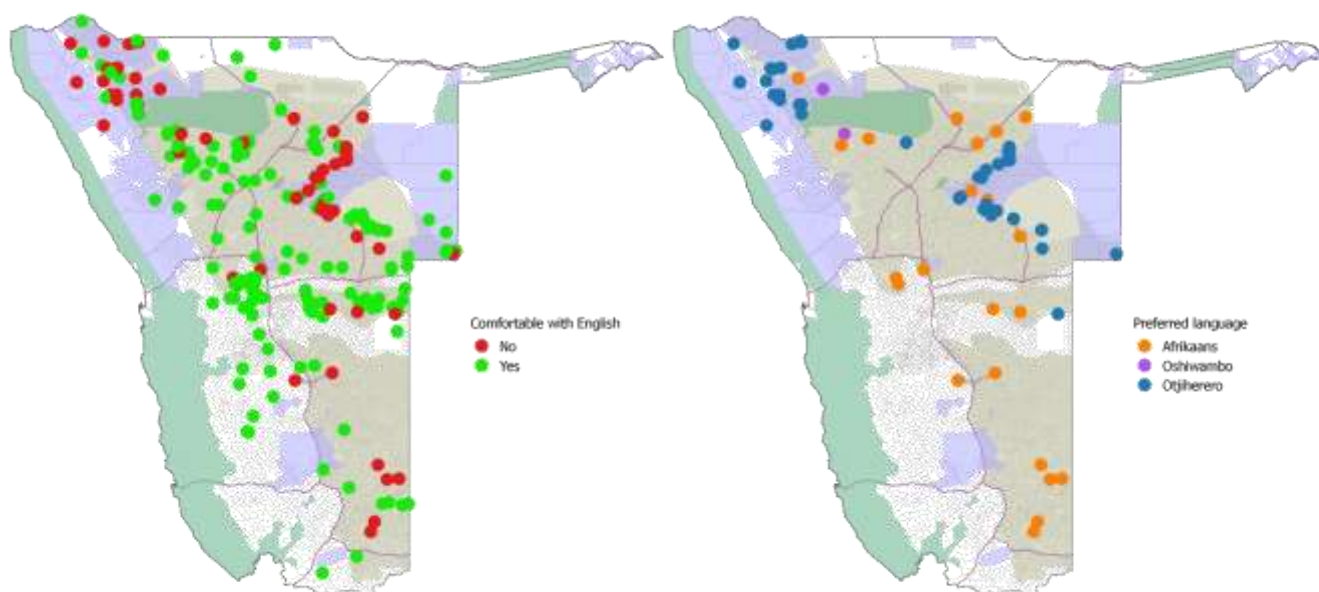
**Table 5** Table showing breakdown of respondents who indicated that they have in the past or are currently receiving advisory services on bush encroachment

Advisory services on BE	Overall	Commercial	Resettlement	Communal
Total responses	361	106	65	190
In the past				
Yes	94 (26.0%)	34 (32.1%)	25 (38.5%)	35 (18.4%)
No	173 (47.9%)	49 (46.2%)	25 (38.5%)	99 (52.1%)
Not answered	94 (26.0%)	23 (21.7%)	15 (23.1%)	56 (29.5%)
Currently				
Yes	47 (13.0%)	9 (8.5%)	22 (33.8%)	16 (8.4%)
No	198 (54.8%)	65 (61.3%)	23 (35.4%)	110 (57.9%)
Not answered	116 (32.1%)	32 (30.2%)	20 (30.8%)	64 (33.7%)

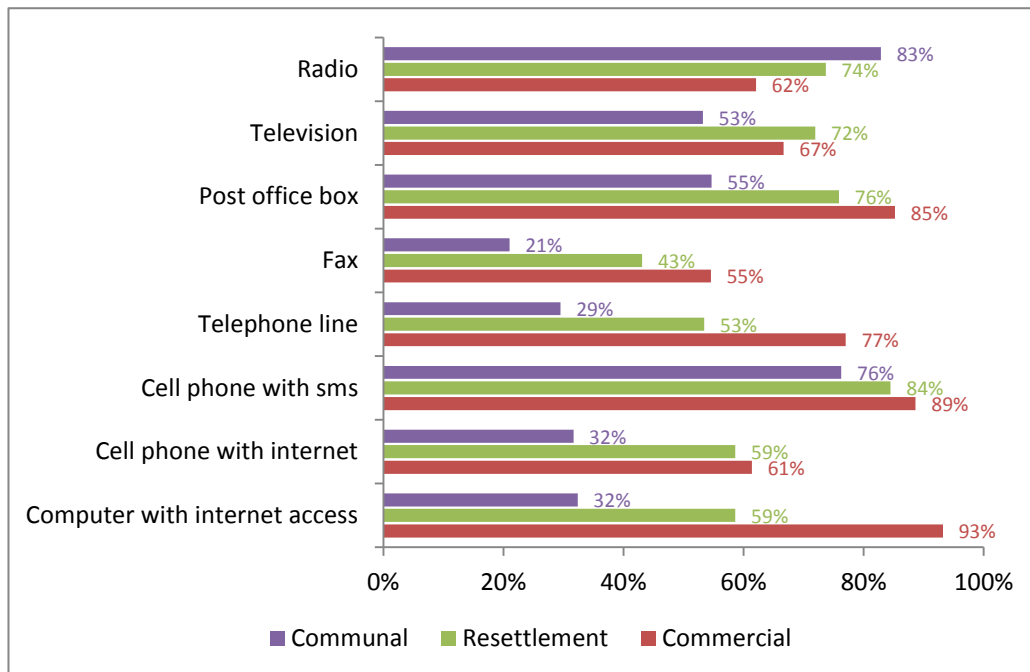
## SECTION 6: COMMUNICATION CHANNELS

**Table 6** Analysis of respondent's language preferences

Language	Overall	Commercial	Resettlement	Communal
Total respondents	361	106	65	190
Comfortable with English				
Yes	184 (51.0%)	70 (66.0%)	48 (73.8%)	66 (34.7%)
No	90 (24.9%)	18 (17.0%)	8 (12.3%)	64 (33.7%)
Not answered	87 (24.1%)	18 (17.0%)	9 (13.8%)	60 (31.6%)
Language preference				
Otjiherero	59	1	2	56
Afrikaans	29	16	5	8
Oshiwambo	2	1	0	1



**Figure 11** Distribution of respondents who indicated they are comfortable with English vs those who are not, and of those who are not, the preferred language



**Figure 12** Analysis on access to communication media by commercial, resettlement and communal farmer respondents

**Table 7** Summary of responses regarding willingness to contribute financially for advisory services

	Overall	Commercial	Resettlement	Communal
Total respondents	361	106	65	190
Willing to pay for advice				
Yes	154 (42.7%)	51 (48.1%)	28 (43.1%)	75 (39.5%)
No	66 (18.3%)	15 (14.2%)	17 (26.2%)	34 (17.9%)
Not answered	141 (39.1%)	40 (37.7%)	20 (30.8%)	81 (42.6%)

**Table 8** Average ranking of priority given by respondents for advisory services according to topics

	Overall		Commercial		Resettlement		Communal	
	Average	n	Average	n	Average	n	Average	n
Agronomy	3.7	211	2.8	59	3.5	45	4.3	107
Bush encroachment	4.4	233	4.2	76	4.3	49	4.7	108
Farm management	4.4	223	3.8	67	4.7	49	4.7	107
Horticulture	3.8	208	2.6	60	4.1	43	4.4	105
Livestock production	4.5	229	4.0	70	4.7	49	4.7	110
Rangeland management	4.5	225	4.0	71	4.7	48	4.7	106
Value addition	4.5	139	3.9	35	4.7	44	4.6	60

## THANK YOU

We take this opportunity to thank the participants of this questionnaire, for their time and input.

For any additional information, please contact us:

Dr Pauline Lindeque  
**Manager: Consulting, Research and Technology**  
**AGRA PROVISION**  
 PRIVATE BAG 12011  
 WINDHOEK  
 Tel: 061 290 9378  
 Cell: 081 127 2978  
 Email: Paulinel@agra.com.na